

Claves.



Deed Plan: Plot 3

Plan Referred To Scale 1:500



Victoria Gardens

Darwen, BB3 3SS

Offers around £155,000



LOOKING TO BUILD YOUR OWN HOUSE?

LAST TWO PLOTS AVAILABLE!! A rare opportunity to buy a plot of land with full planning permission within what will be a gated development of ten luxury properties. Countryside location at Waterside near Huddlesden, Darwen with easy access to the motorway network, hospital and amenities in Blackburn. Contact our office to arrange an appointment to view the plots.



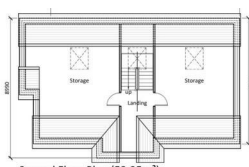
Front Elevation



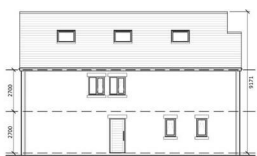
Side Elevation



First Floor Plan (98.59m²)

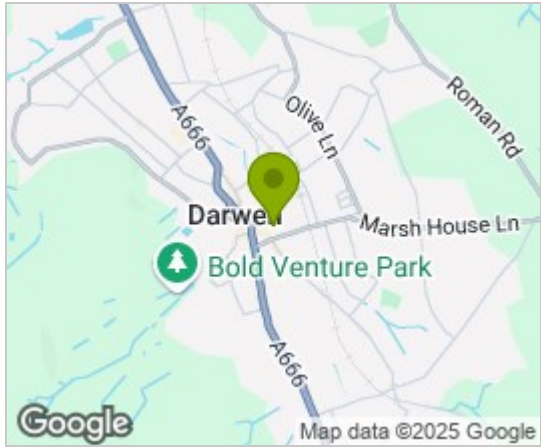


Second Floor Plan (53.95m²)

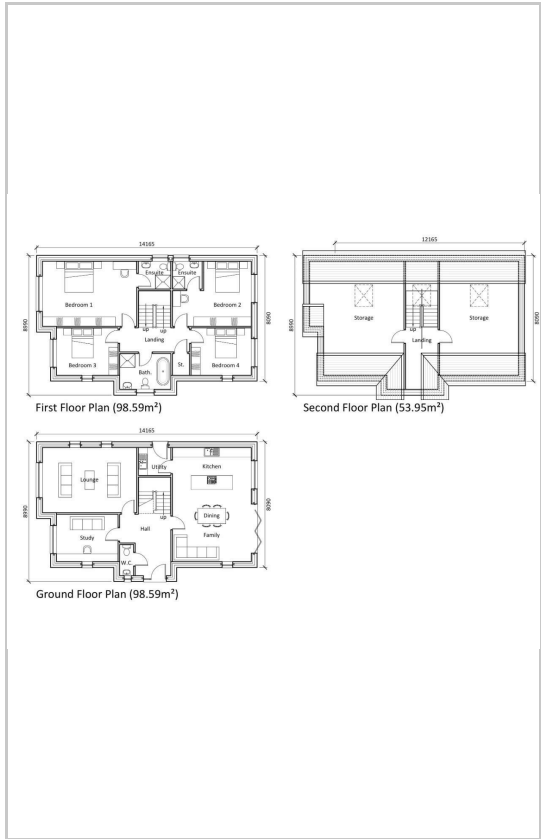


Ground Floor Plan (98.59m²)

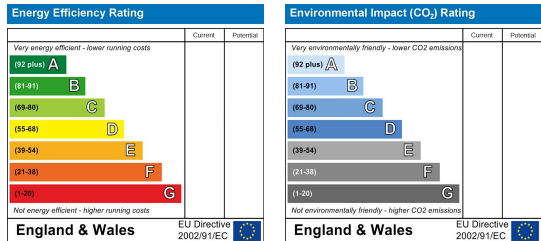
Area Map



Floor Plans



Energy Efficiency Graph



These particulars, whilst believed to be accurate are set out as a general outline only for guidance and do not constitute any part of an offer or contract. Intending purchasers should not rely on them as statements of representation of fact, but must satisfy themselves by inspection or otherwise as to their accuracy. No person in this firm's employment has the authority to make or give any representation or warranty in respect of the property.

Claves.

Claves House, 295D Darwen Road, Bromley Cross, BL7 9BT.
 t. 01204 929 940 | e. info@claves.co.uk | w. claves.co.uk